

大地の芸術祭。

ECHIGO-TSUMARI ART TRIENNIAL 2009

Sun. 26 July → Sun. 13 September, 2009

Venue : Echigo-Tsumari Region, 760 square kilometers

[Tokamachi City + Tsunan Town, Niigata Prefecture]

Organized by : Echigo-Tsumari Art Triennial Executive Committee

Co-organized by : NPO Echigo-Tsumari Satoyama Collaborative Organization

Chairman : Yoshifumi Sekiguchi (Mayor of Tokamachi)

Honorary chairman: Hirohiko Izumida (Governor of Niigata)

Vice chairman : Mikio Kobayashi (Mayor of Tsunan Town)

General producer : Soichiro Fukutake

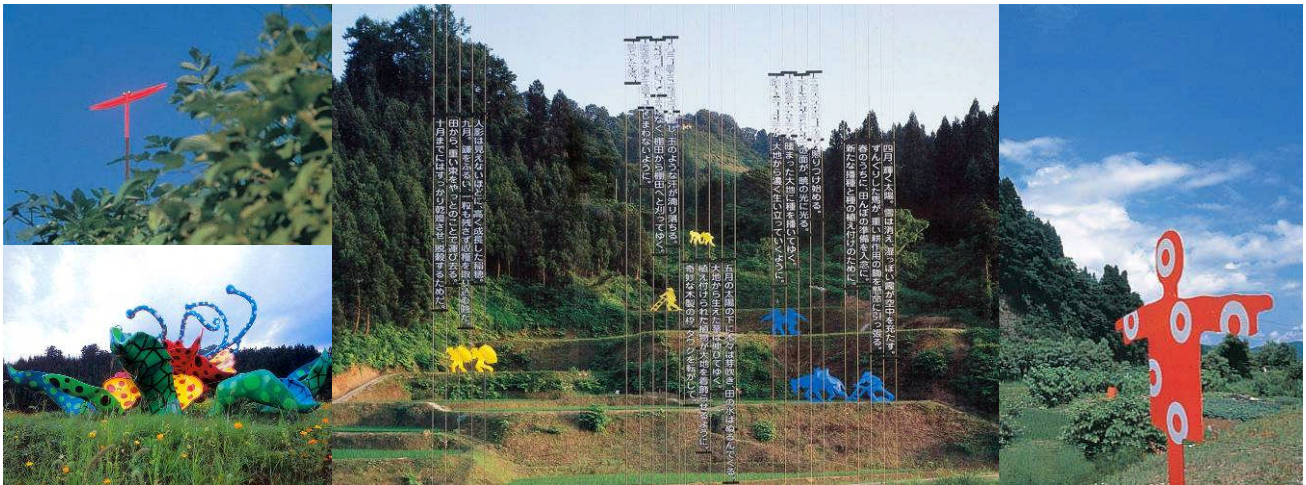
General director : Fram Kitagawa

Art advisors : Tony Bond, Tom Finkelpearl, Ulrich Shneider, Yuka Irisawa, Yusuke Nakahara

Number of artworks : 350 artworks by artists from 38 countries (including 200 new artworks)

Echigo-Tsumari Autumn 2009: October 3 (Sat) through November 23 (Mon)

URL:<http://www.echigo-tsumari.jp/english/>



Message

This, the fourth Echigo-Tsumari Art Triennial(ETAT), will herald a new phase. Artworks will be created in rice paddies, abandoned houses, and closed schools. Set in the rustic *satoyama* landscape, the artworks will be made by collaboration between local residents, urban supporters, and artists. Local people have told us the toils of their ancestors who worked the earth through agriculture. Many people think of Echigo-Tsumari as a place where they will be greeted by the smiles of the old people who live there.

The local people are nourished by the local *Koshihikari* rice, seasonal vegetables and mountain plants grown from the bounty of the snow and the land.

Now, not only artists, but also international institutions and universities are becoming involved in Echigo-Tsumari and see it as a place of hope. Echigo-Tsumari is a place where people gather to enjoy and create performances, music and visual arts. The Triennial will revitalize the region by combining human endeavor and local natural resources.

Come and visit Echigo-Tsumari this summer.

Soichiro Fukutake, General producer
Fram Kitagawa, General director

Concept

Human beings as part of nature

Now Echigo-Tsumari, nestled in rich natural surroundings, is at a turning point in its cultural history. This gives us an opportunity to think about the global environment and revise the modern paradigm. Our theme is "human beings are a part of nature". The Echigo-Tsumari region is developing, with the aim to become a model community that can demonstrate the possibilities for relations between people and nature.

Art in Echigo-Tsumari

Satoyama and Art

At each ETAT to date, a large number of works were scattered over a wide area - on mountains, in and around rivers and terraced paddy fields and in traditional villages. In contrast to today's obsession with rationalization and efficiency, which would have concentrated these works in one place, ETAT has scattered the works across 200 locations in a blithely inefficient - yet effective - way. Visitors liberate their bodies and senses and feel the life of the community while viewing works of art that highlight the beauty and richness of the rustic nature of *satoyama* and acknowledge the centuries-old human interaction with the land.

Art Creation in Someone else's Land

Art has the ability to connect people to people, and people to place. In creating a work in Echigo Tsumari, an artist is obliged to communicate with others. The effort and enthusiasm of the artists, who are creating art on someone else's land, has moved and involved the local residents. Thus they too were committed to the work - not as "the audience" but as collaborators. The artist's piece became one that was created and shared by the residents.

Revitalizing local objects and skills

ETAT has always worked to utilize existing objects. "Existing objects" could be villages in mountains, rivers, terraced rice fields, folk dwellings, or schools. The Triennial has also utilized regional skills and vocations. With the assistance of artists, designers, architects and experts, we create new values from these objects and skills and make them into regional assets.



Culture Created from Everyday Life

Since the Meiji Period, until recently, art in Japan has been defined in the narrow framework of Japanese and Western painting, music and sculpture. In this concept of art, aspects of our lives such as street performance, festivals, food, clothes, houses, gardens and plants, which should be recognized as art, were overlooked. ETAT will deploy various projects as "art" regardless of their genre so that art can be in its original form, as part of our everyday lives.

Site Specific Art Works

People can rediscover the value of a location through art. Art works to be created in the ETAT need to be "site specific". Visitors have been drawn to the "region" and rediscovered it through art. Site specific art works harmonize with their location and attract people to that location. Landscapes, life as well as the traces of life that had existed in the region for centuries, were represented through such art works. The collection

of such art works has given a depth to the “region” that was only vaguely recognized before. Local residents often cannot see the potential of their land. Art helps them to restore pride in their land and region.

Embodiment of Time

Christian Boltanski used the now-closed Higashikawa Elementary School for the installation site of his art works during the second ETAT. The school classrooms were covered with various objects such as the school’s guest slippers, used clothes and dry flowers. Visitors who visited the site had a sense of *deja vu* upon entrance - as though they had seen and heard children playing and singing. Artists had embodied the life and the time that were once part of the village life. Their works of art brought back the memories of people who used to live there. ETAT uses art to embody the time that had existed in the village over centuries, and by doing that, values the “time” people have spent there.



Collaboration Transcending Regions, Generations and Genre

Numerous young volunteers from cities have participated in ETAT. They called themselves “Kohebi-Tai (A Group of Small Snakes)” and have involved themselves in various activities as volunteers – creating art works, working in rice paddies, snow clearing and helping local residents in the aftermath of the Great Chuetsu Earthquake in 2004. Students and artists from cities have come together with elderly people who have been farming all their lives in this depopulating region. This encounter changed their relationship from one of conflict and puzzlement to one of understanding and collaboration. The Echigo-Tsumari region has been opened up by art and young people. What was discovered through this process of collaboration was that for the supporters living in cities, Echigo-Tsumari is a precious place for building hope. Others have now also started to involve themselves in making a “new homeland” in Echigo-Tsumari.



Regional Connections

The advancement of civilization has led to the frequent movement of people, capital and information across borders, which has had a significant impact on the national framework. This has increased the importance of regional communities as a base for people to live.

The twenty first century will be the century for regional communities. Echigo-Tsumari recognized the shift in the modern paradigm ten years ago and has developed regional communities based on this idea. The development of regional communities has been an attempt to establish diversified values by finding the potential of regions. It contrasts to the modern values which are equated in only monetary terms. The very regions that have been lagging behind and have not been able to catch up with “modernization” are the ones that have the potential to offer these values. In the context of this global trend, other communities such as the Setouchi region, Kamikatu Town, Kamikoani Village, Okura Village and Niigata City are using the Echigo-Tsumari as a regional development model. By connecting regions, Echigo-Tsumari will become a twenty first century model as a regional development centre through culture and art.

International Connections

Artists from various different cultures have participated in ETAT and it has been widely acclaimed as an international art festival with the participation of artists from 32 countries for the first Triennial, 23 countries for the second and 45 countries for the third Triennial. Art and collaborations through art has enabled communication between artists and local residents who do not share the same language. The works of artists have reflected the world all over the region. Artists from thirty eight different countries will participate in the fourth ETAT and cooperation and there will be collaborations with Asialink Australia, Hong Kong Arts Centre, China Academy of Art and the city of Nantes in France. Artists will settle in the region and discover the uniqueness of the land as well as foster a global perspective.

Collaboration with Universities

Universities and professional schools now involve themselves in the region as places of learning. Kyoto Seika University will have access to the old Karekimata Elementary School for their activities. Tokyo University of the Arts will utilize the old Senda Elementary School with other universities such as Tama Art University, Tokyo University and Osaka University. Tokyo College of Photography and Nihon University College of Art will base their activities in abandoned houses. Many other universities and seminars will participate in events and work towards the establishment of regional communities through exchanges and collaborations between students and local settlements.

Echigo-Tsumari Art Field

Over the past several years, we have been working on the regeneration of the Echigo-Tsumari region. Instead of making the region simply a place for holding art events triennially, we are trying to transform it into a place where residents and people from outside the region can work vigorously through the utilization of the existing art works and establishments and welcome people to the region throughout the year. Our goal is to make Echigo-Tsumari a home of culture and art that attracts people around the world to help assist the development of a regional identity by calling the region "Echigo-Tsumari Art Field".

NPO Organization: Echigo-Tsumari Satoyama Collaborative Organization

A NPO organization called Echigo Tsumari Satoyama Collaborative Organization was established in July 2008 to help assist with the development of a regional identity and the self-reliance of the Echigo-Tsumari Art Triennial. The organization will provide solutions to various issues underlying in the regional community through activities such as utilization of abandoned houses and closed schools, revitalization of deserted land and creation of increased employment opportunities. The organization is made up of community residents and supporters who live outside of the region. Their activities are based on the following three concepts – the ETAT, the Home for ETAT and the development of communities through culture and art. For the Echigo-Tsumari Art Field, the organization will take the six months of snow season into consideration and try to make the region to be the place where people around the world can come together even during winter. .

Features of the 4th Triennial

Closed School Projects

Echigo-Tsumari faces the problem of closing of schools caused by the decreasing of children and the aging. This edition of the Triennial will transform 10 schoolhouses into museums, accommodations and university centers with the aim of regenerating them as bases for regional exchanges and local employment.



Fukutake House

Under the direction of the Producer Soichiro Fukutake, major galleries in Japan and overseas will gather and exhibit their representative artists.

Participating galleries: Gallery Koyanagi, Hiromi Yoshii, Genji Taki Gallery, Keumsan Gallery, Long March Space, Nichido Contemporary Gallery Art, Sky The Bus House, Shugo Arts, Tomio Koyama Gallery



Seizo Tajima Museum of Picture Book Art

Tajima is a laureate of the Golden Apple Award at the second Biennale of Illustrations Bratislava.



Taeko Tomiyama Retrospective

Taeko Tomiyama is an artist struggling with the themes: mines, the Third World, Korea and the war responsibilities.



Tomoko Mukaiyama (Japan/Netherlands) "wasted"

The pianist Mukaiyama's international art project combining art, architecture and music



Christian Boltanski + Jean Kalman (France) "Last Class"

The Boltanski archive will be annexed to the art space created in 2006.

Vacant House Projects

For the last Triennial, artists and architects regenerated vacant houses into art spaces. They are still used as a restaurant and an inn, which can contribute to local economy. For the fourth Triennial, we are newly working on the regeneration of vacant houses while seeking their owners.



Antony Gormley (UK) "Another Singularity"



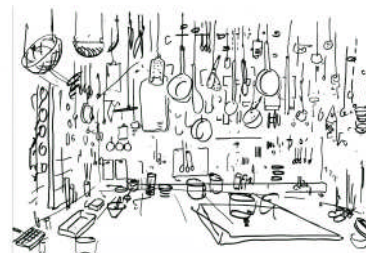
Claude Leveque (France) "Dans le silence ou dans les bruits"



Janet Cardiff & George Bures Miller (Canada/Germany) "Storm House"



Chiharu Shiota (Japan/Germany) "House Memory"



Takaharu Tezuka + Naoyoshi Hikosaka (Japan) "House of Ink"

Open Air Artworks

A great number of works will be scattered through the beautiful countryside landscape; in rice paddies, house gardens, forests and along roads.



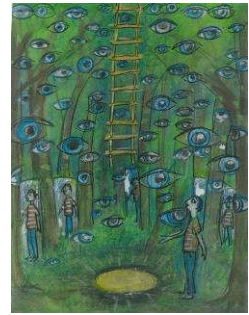
Pascal Martin Tayou
(Cameroon/France)
"Reverse City"



SMaK (Lithuania/Poland)
"The Visitors"



Yukihisa Isobe (Japan)
"Ancient River Shinano's
natural dike was here"



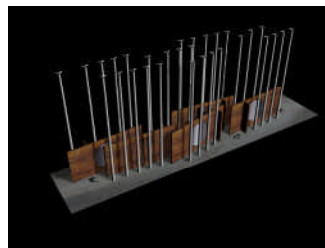
Antier Gummels
(Germany/Japan)
"Internal Voyage"

North-East Asia Art Village

In Uwano community, Tsunan Town, where Cai Guo Qiang's "Dragon Museum of Contemporary Art (DMOCA)" and Kim Koohan's "Magpie's House" are located, a long-term artists-in-residence project will be launched this summer to build a network of North-East Asian artists, organizations and institutions. Every three years, an open proposal competition will be organized inviting Cai as the chairman of the jury to select young artists to create works of art in residence for ETAT.



LeeJeahyo (Korea)



Guan Huabin (China)



Lin Shnehong (Taiwan)



Jennifer Wen Ma
(China/USA) for DMOCA

Australia House

With great support of Asialink, Australia Embassy and Australia-Japan Foundation, a vacant house will be refurbished into a base for cultural exchanges between Australia and Echigo-Tsumari. For this Triennial, three artists and a curator will work in residence in collaboration with the Urata community.



(from left)
Alex Ritzkala
Lucy Bleach
Richard Thomas
(right)
View from
Australia House



Films

Two full-length films will be produced for the 2009 Triennial. One is directed by the French artist Jean-Michel Alberola, who has shot for two years the life in all seasons in Koyamaru where his work "Little Utopian House" is located. The other is the one by Japanese young film maker Daisuke Hatanaka focusing on the declined shopping street.



Jean-Michel Alberola
"KOYAMARU"

Events & Performances

Amid globalization, local cultures and performances are disappearing all over the world. ETAT is a forum where a variety of events full of locality and originality come together. _



Green Music Festival |with NOWHERE

Nowhere, a cultural centre and production house for young Amsterdammers, will send Caprice, a famous Dutch soul singer, and four of his talented pupils along with DJ Kid Sublime to collaborate with Echigo-Tsumari dancers by performing together at a special concert.

Venue: Nagumo Yui-no-sato

Date: August 1



Cambodian Circus: Phare Pnleu Selpak

NGO Phare Pnleu Selpak was founded to educate and encourage by mens of circus young people suffering from land mines and human traffic by circus. With help of France, they have performed "nouveau cirque" incorporating Cambodian music and dance in the world.

Venue: Matsudai "No Butai"

Dates: August 13 - 16



BEAT ASIA

Asian music and dance show.

Performers:

Ondeko Za (Japanese drum group), Jinenjo Club (Japan), Kanahan (Indonesian farmers percussion rock band), Bimo Wlwohatmo (Indonesian dancer), others

Venue: Matsudai "No Butai"

Date: August 22



Bunraku (Japanese puppet show)+ Noh play "Kirishito horo shonin den"

Song: : UA

Noh play: Nobuyuki Oe

Puppet show: Kugutsu-sha

Venue : Matsudai "No Butai"

Date: August 30

Information

Passport

Available to see all 350 artworks and discount for events

Adult: 3500 yen (advance sale 3000 yen)

Student + over 65 years old: 2500 yen (advance sale 2000yen)

Elementary school + junior & high school students 800 yen (advance sale 500 yen)

Access

■ From Tokyo

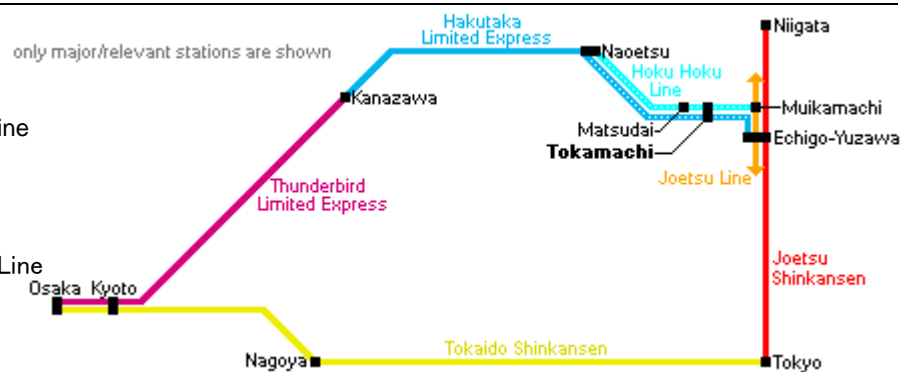
Joetsu Shinkansen + Hokuhoku Line

110 min.

■ From Niigata

Joetsu Shinkansen + Hokuhoku Line

110 min



※Tokamachi is the transportation hub of Echigo-Tsumari.

Guided Tours

Guided bus tours are available during the Triennial period.

● North bound/South bound bus tour

Departing Echigo-Yuzawa and Tokamachi Stations /every day / Fee 5,800 yen

● Digest bus tour

Departing Tokamachi Station /every weekend / Fee :4,000 yen

● Matsudai-Matsunoyama area bus tour

Departing Naoetsu and Matsudai Stations /every weekend / Fee: 5,800 yen

For other tour menu and customized tours, please inquire ETAT Tokyo Secretariat.

Accommodation

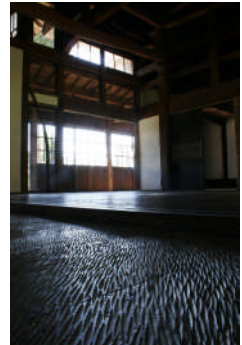
There are a number of hot spring resorts, Japanese inns, campgrounds, cottages, and hotels as well as the artists' created accommodation.



James Turrell "House of Light"



Marina Abramovic "Dream House"



**Nihon University
"Shedding House"**

For further information:

Echigo-Tsumari Art Triennial Tokyo Secretariat
c/o Art Front Gallery
Hillside Terrace A, 29-18 Sarugaku-cho, Shibuya-ku, Tokyo 150-0033
TEL +81 (0)3 3476 4360 FAX +81 (0)3 3476 4874
E-mail: tsumaripr@artfront.co.jp
URL: www.echigo-tsumari.jp/english